



India Meteorological Department
(Ministry of Earth Sciences)

NATIONAL BULLETIN NO. 6 (Land/03/2025)

TIME OF ISSUE: 0910 HOURS IST

DATED: 18.07.2025

FROM: INDIA METEOROLOGICAL DEPARTMENT (FAX NO. 24643965/24699216/24623220)

TO: CONTROL ROOM, NDM, MINISTRY OF HOME AFFAIRS ([FAX.NO. 23093750](#))

CONTROL ROOM NDMA ([FAX.NO. 26701729](#))

CABINET SECRETARIAT (FAX.NO.23012284, 23018638)

PS TO HON'BLE MINISTER FOR S & T AND EARTH SCIENCES (FAX NO.23316745)

SECRETARY, MOES (FAX NO. 24629777)

H.Q. (INTEGRATED DEFENCE STAFF AND CDS) (FAX NO. 23005137/23005147)

DIRECTOR GENERAL, DOORDARSHAN (23385843)

DIRECTOR GENERAL, AIR (23421105, 23421219)

PIB MOES (FAX NO. 23389042)

UNI (FAX NO. 23355841)

D.G. NATIONAL DISASTER RESPONSE FORCE (NDRF) (FAX NO. 26105912, 2436 3260)

DIRECTOR, PUNCTUALITY, INDIAN RAILWAYS (FAX NO. 23388503)

CHIEF SECRETARY, GOVT. OF UTTAR PRADESH (FAX NO. 0522-2239283)

CHIEF SECRETARY, GOVT. OF MADHYA PRADESH (FAX NO. 0755-2551521)

CHIEF SECRETARY, GOVT. OF RAJASTHAN (FAX NO. 0141-2227114)

CHIEF SECRETARY, GOVT. OF BIHAR (FAX NO. 0612-2217085)

CHIEF SECRETARY, GOVT. OF DELHI (FAX NO. 011-23392101)

CHIEF SECRETARY, GOVT. OF CHANDIGARH (FAX NO. 0172-2740608)

CHIEF SECRETARY, GOVT. OF JHARKHAND (FAX NO. 0651-2400255)

CHIEF SECRETARY, GOVT. OF CHHATTISGARH (FAX NO. 0771-2221206)

Subject: Depression over northwest Madhya Pradesh & adjoining Southwest Uttar Pradesh

The Depression over Central Parts of South Uttar Pradesh moved west-northwestwards with a speed of 17 kmph during past 6 hours and lay centred at 0530 hrs IST of today, the 18th July, 2025, over northwest Madhya Pradesh & adjoining Southwest Uttar Pradesh, near latitude 26.3°N and longitude 79.0°E, 20 km south of Etawah, 80 km east of Gwalior, 120 km east-southeast of Dholpur and 140 km southeast of Agra.

It is likely to move west-northwestwards across northwest Madhya Pradesh and east Rajasthan during next 24 hours.

Warnings:

(i) Rainfall Warning:

East Uttar Pradesh: Light to moderate rainfall at most places with **heavy rainfall** at isolated places on 18th July.

West Uttar Pradesh: Light to moderate rainfall at most places with **heavy to very heavy rainfall** at isolated places is very likely on 18th July.

West Madhya Pradesh: Light to moderate rainfall at most places with **heavy to very heavy rainfall** at isolated places is very likely on 18th July and **heavy rainfall** at isolated places on 19th July.

East Rajasthan: Light to moderate rainfall at most places with heavy to **very heavy rainfall** at a few places and **extremely heavy rainfall** at isolated places on 18th July and **heavy rainfall** at isolated places on 19th July.

West Rajasthan: Light to moderate rainfall at most places with heavy to **very heavy rainfall** at a few places and **extremely heavy rainfall** at isolated places on 18th July and **heavy rainfall** at isolated places on 19th July.

(ii) Wind Warnings: Squally wind speed reaching 40-50 kmph gusting to 60 kmph over south Uttar Pradesh & adjoining north Madhya Pradesh and 30-40 kmph gusting to 50 kmph over adjoining areas of East Rajasthan, and South Haryana is likely to prevail during next 12 hours and decrease thereafter.

(iii) Impact Expected and Action Suggested due to very heavy/extremely heavy rainfall and squally winds (Uttar Pradesh, Madhya Pradesh, Rajasthan, Haryana)

Impact expected:

- ❖ Breaking of tree branches, uprooting of small trees like banana, papaya, drum sticks. Strong wind and rain may damage plantation, horticulture and standing crops.
- ❖ Partial damage to vulnerable structures due to strong winds and rain.
- ❖ Minor damage to kutcha houses/walls, huts and roads due to heavy rain.
- ❖ Loose objects may fly.
- ❖ Onshore and offshore operations may get affected.
- ❖ Small ships, trawlers and boats may be affected.
- ❖ Road and rail traffic may be affected due to heavy rain and squally winds.
- ❖ There could be localised landslides, mudslides, landslips, water logging, inundation and flooding over low lying areas.
- ❖ Occasional reduction in visibility due to heavy rainfall.
- ❖ Helicopter services may get affected.

Action suggested:

- ❖ People are advised to keep a watch on the weather for worsening conditions and be ready to move to safer places accordingly.
- ❖ Take safe shelters; do not take shelter under trees, as there could be lightning.
- ❖ In case of expected lightning, unplug electrical/ electronic appliances, immediately, get out of water bodies and keep away from all the objects that conduct electricity.
- ❖ Tourism and recreational activities to be regulated.
- ❖ Onshore and offshore activities to be judiciously regulated.
- ❖ Helicopter services to be regulated.

Next bulletin will be issued at 1130 hrs IST of today, the 18th July, 2025.

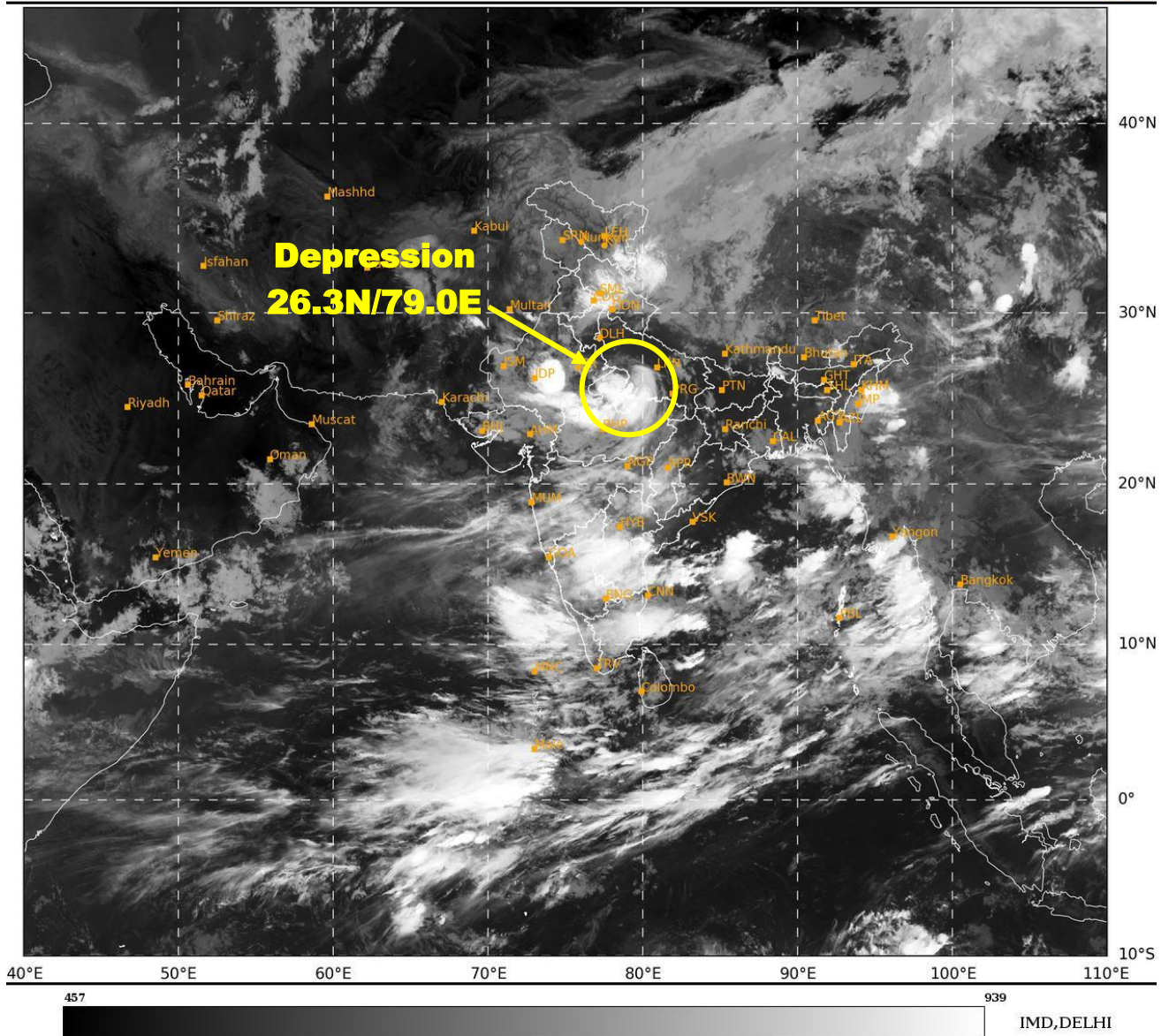
(TRISANU BANIK)

Scientist-D, IMD, New Delhi

Copy to: Meteorological Centres- Lucknow, Patna, Bhopal, Jaipur, Delhi, Chandigarh, Ranchi, Ahmedabad.

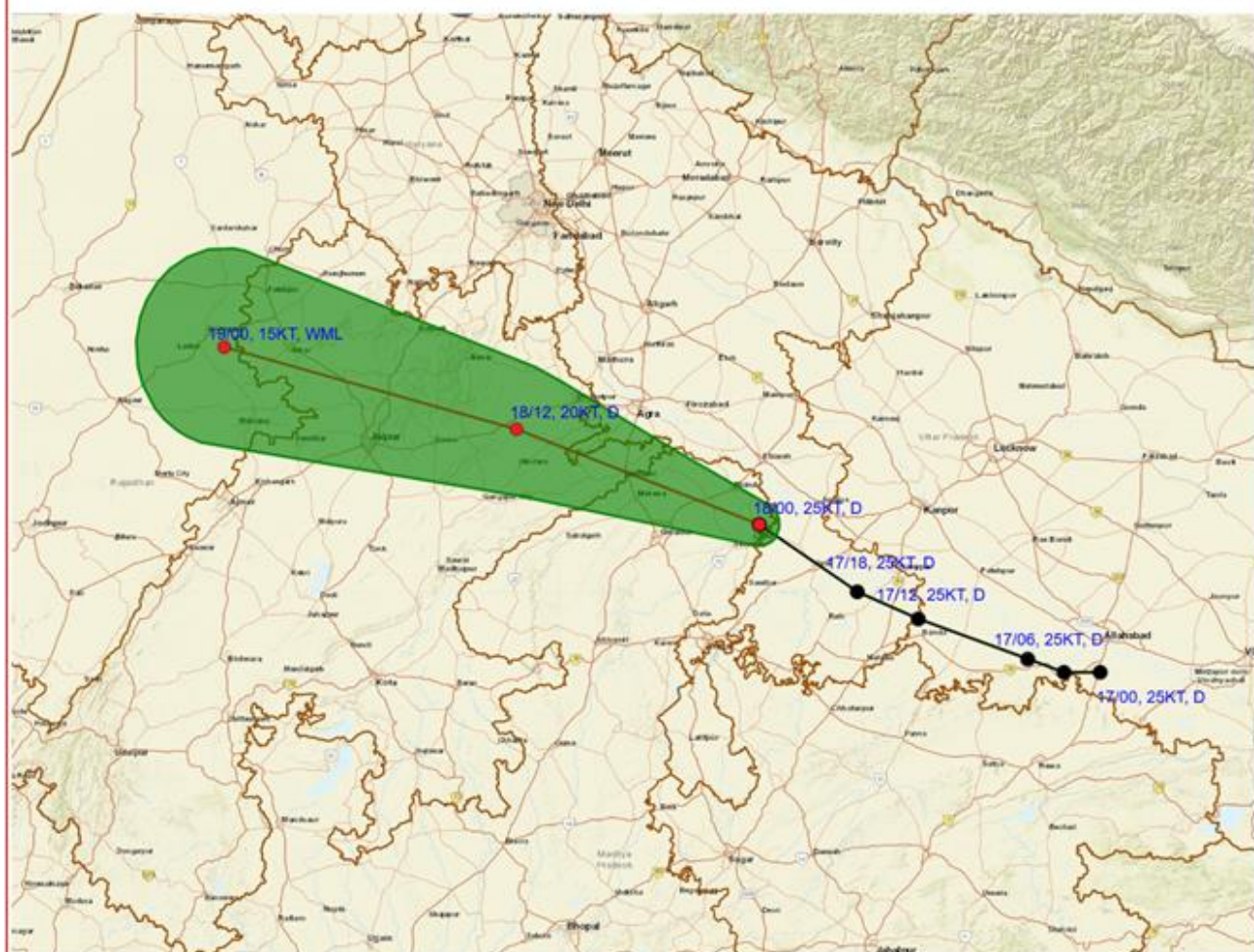
SAT : INSAT-3DR IMG
IMG_TIR1 10.8 um
LIC Mercator

18-07-2025/(0145 to 0212) GMT
18-07-2025/(0715 to 0742) IST





**OBSERVED AND FORECAST TRACK ALONG WITH CONE OF UNCERTAINTY OF
LAND DEPRESSION OVER NORTHWEST MADHYA PRADESH AND ADJOINING
SOUTHWEST UTTAR PRADESH AT 0530 HRS. IST (0000 UTC) OF 18th JULY 2025**

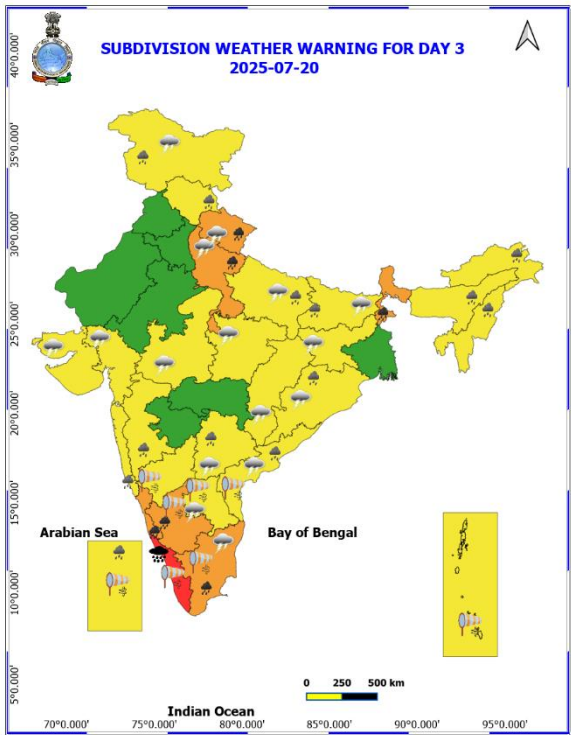
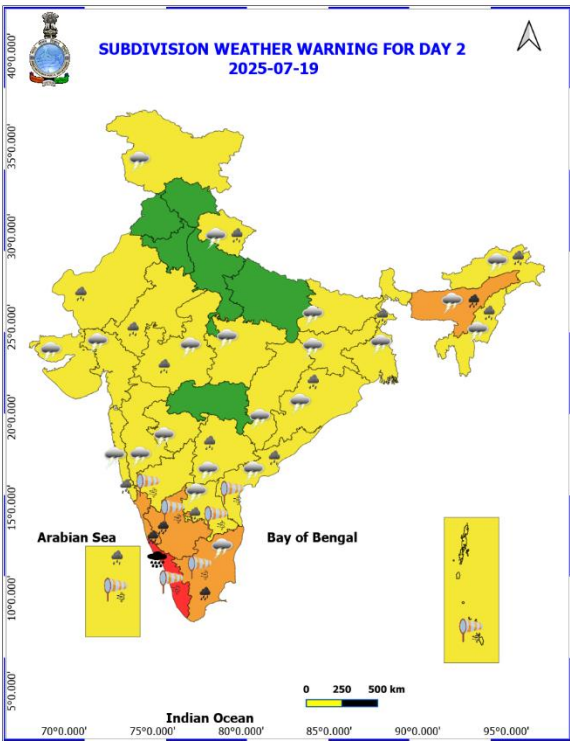
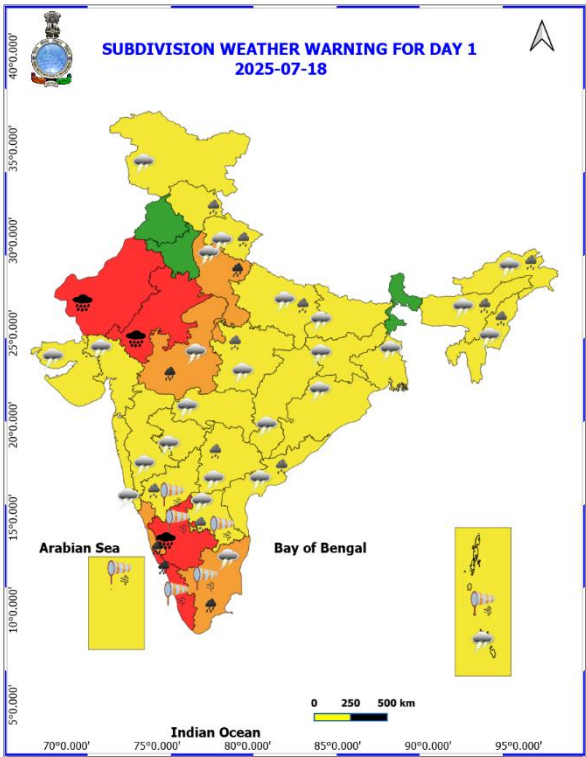


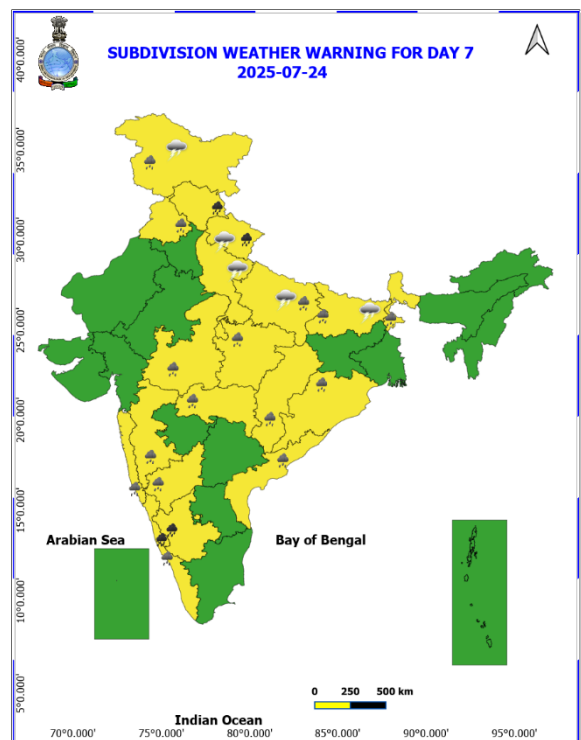
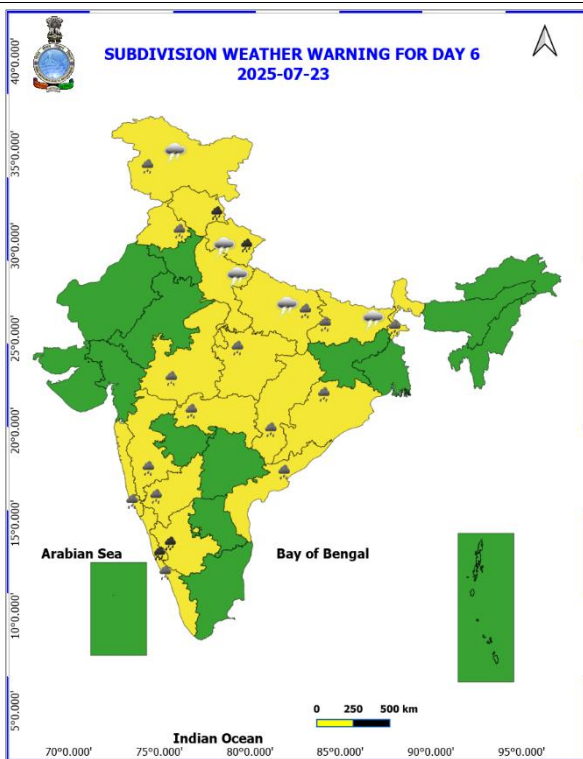
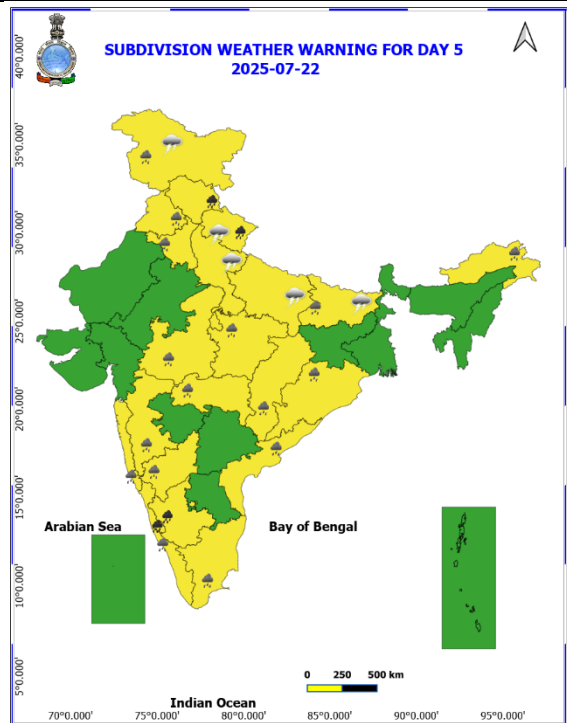
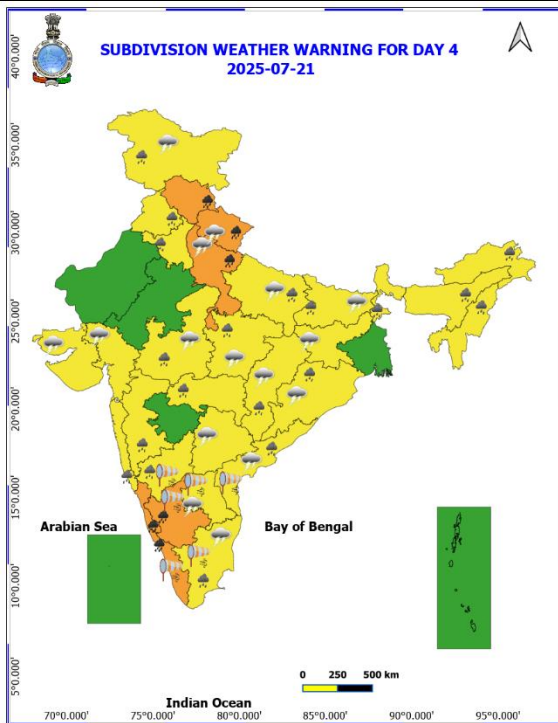
DATE/TIME IN UTC
IST=UTC + 0530
L: LOW PRESSURE AREA
WML: WELL MARKED LOW PRESSURE AREA
D: DEPRESSION (17-27 KT)
DD: DEEP DEPRESSION (28-33 KT)
CS: CYCLONIC STORM (34-47 KT)
SCS: SEVERE CYCLONIC STORM (48-63KT)
VSCS: VERY SEVERE CYCLONIC STORM (64-89 KT)
ESCS: EXTREMELY SEVERE CYCLONIC STORM (90-119 KT)
SuCS: SUPER CYCLONIC STORM (≥ 120 KT)

1KT=1.85 KMPH

- LESS THAN 34 KT
- 34-47 KT
- ≥ 48 KT
- OBSERVED TRACK
- FORECAST TRACK
- ▲ CONE OF UNCERTAINTY

Weather Warning Graphics





Flash Flood Guidance

24 hours Outlook for the Flash Flood Risk (FFR) till 0530 IST of 19-07-2025 :

Moderate flash flood risk likely over few watersheds & neighbourhoods of following Met Sub-divisions during next 24 hours.

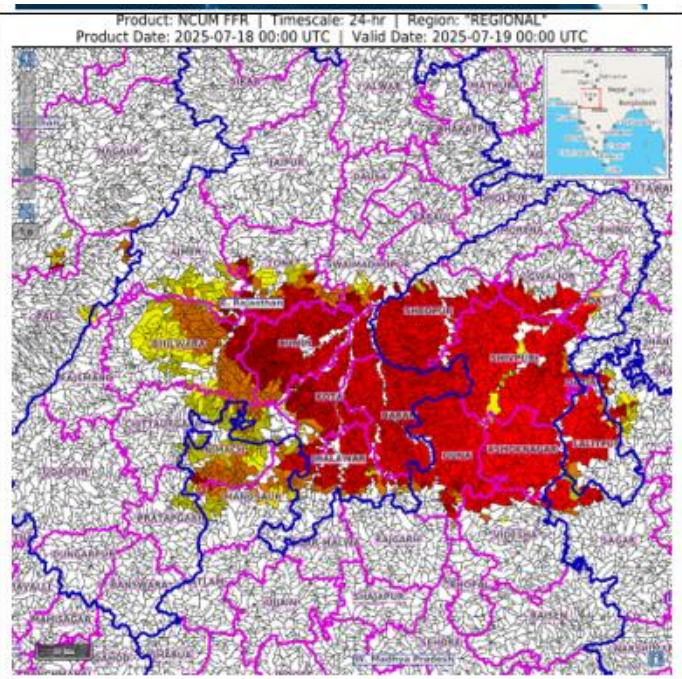
East Rajasthan - Baran, Bundi, Jhalawar, tonk, Bhilwara, Ajmer, Swaimadhopur, Jhalawar, and Kota districts.

West Uttar Pradesh - Hamirpur, Jalaun, Jhansi, Lalitpur and Mahoba districts.

East Madhya Pradesh - Chhatarpur, Katni, Sagar and Tikamgarh districts.


West Madhya Pradesh - Ashoknagar, Datia, Guna, Gwalior, Morena, Rajgarh, Sheopur, Shivpuri, Neemach, Mandsaur and Videsha districts.

Surface runoff/ Inundation may occur at some fully saturated soils & low-lying areas over Area of Concern (AoC) as shown in map due to expected rainfall occurrence in next 24 hours.



Flash Flood Risk

 **High Risk (Take Action)**

 **Moderate Risk (Be Prepared)**

 **Low Risk (Be Updated)**